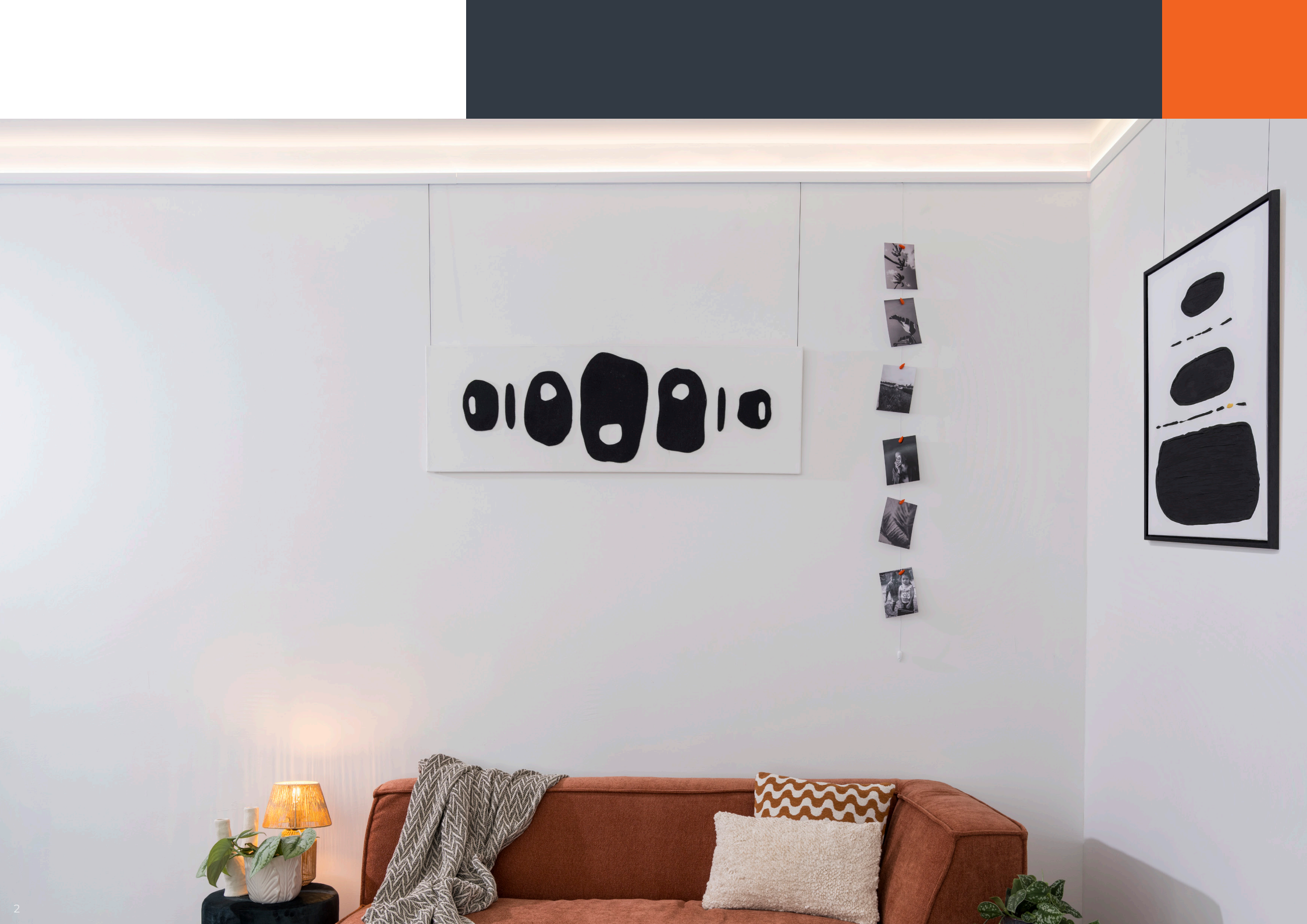


newlyⁿ
CONNECTING ART



CATALOG
2025

www.newlypicturehangingsystems.com



INDEX



R10 RAIL 4 · 5

R20 RAIL 6 · 7

R30 RAIL 8 · 9

R35 RAIL LED 10 · 11

R70 RAIL 12 · 13

R40 RAIL 14 · 15

R50 DISPLAY 16 · 17

H300 PANEL DISPLAY 18 · 19

Z100 POWERBAR 20 · 21

SOLOHANGER 22

CEILINGHANGER 23

STOPPER SET 24

SALE SUPPORT 25



R10
04



R35
10



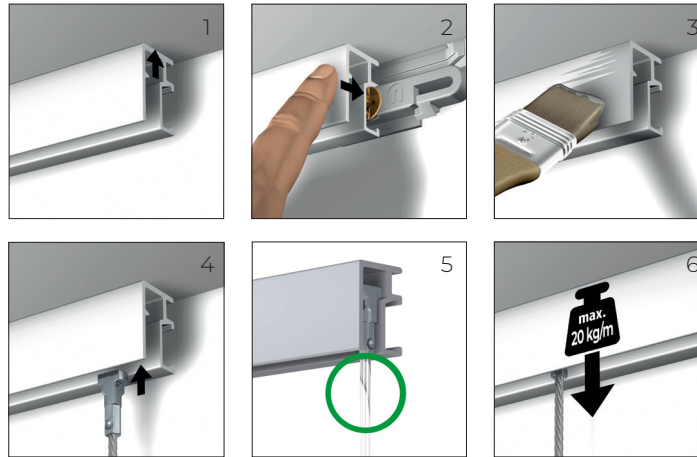
R70
12



SOLO-
HANGER
22

R10

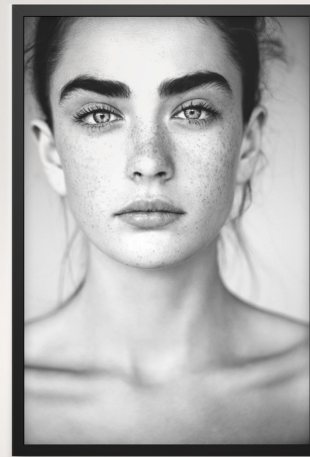
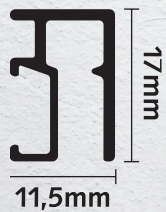
Compact



- 1 Installing tight to the ceiling
- 2 Easy one touch installation
- 3 Re-paintable
- 4 Hang wire in any position along the rail
- 5 Invisible hanging of the Twister head
- 6 Maximum 20kg per meter / 44 lb. per 3 ft.



Watch the
installation video
here



Rail R10



The R10 wall rail is produced from high quality aluminium and is suitable for 20 kg per meter / 44 lb per 3 ft. (size 17 x 12 mm/ 0,7 x 0,5 inch). Available in 3 colours.

White/primer: A lively and bright primer white (RAL 9016) which can be repainted without any special preparations.

Alu/silver: Anodized aluminium, gives a very contemporary and robust look.

Black: A stylish black colour.

Article numbers:

Newly R10 rail 200 cm/6,5 ft white	1101.200
Newly R10 rail 200 cm/6,5 ft white packed per 1	1101.201
Newly R10 rail 300 cm/9,8 ft white	1101.300
Newly R10 rail 300 cm/9,8 ft white packed per 1	1101.301
Newly R10 rail 200 cm/6,5 ft silver packed per 1	1102.201
Newly R10 rail 200cm/6,5 ft black	1103.200

Newly R10 end cap white	2101.100
Newly R10 end cap silver	2102.100
Newly R10 end cap black	2103.100
Newly R10 corner connector white	2101.200
Newly R10 corner connector silver	... 2102.200
Newly R10 installation set 200cm/6,5 ft white	4040.210**
Newly R10 installation set 200cm/6,5 ft silver	4040.211**
Newly R10 installation set 200cm/6,5 ft black	4040.212**

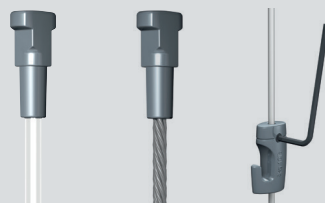
Newly clip white	3010.101*
Newly drill template	4090.100
Newly screw (3,5x40mm)	4010.120 *
Newly plaster board screw	4010.110*
FISCHER DUOPOWER 5mm plug 5x25	4020.060*

* Use 3 pieces per meter

**Includes 2 end caps + 1 corner connector except 4040.212

Each rail is separately packed in shrink wrap to avoid surface damage.

Cords and rod



The Twister comes in with a reliable transparent perlon cord \varnothing 2 mm polyamide or with a contemporary looking steel cable \varnothing 1,8 mm.

Both cords have a 20kg/44lb. capacity. Besides these cords there is also a rigid 2 mm rod with a Twister head available.

Article numbers:

Perlon Twister

100 cm/3,2 ft	5010.100
150 cm/4,9 ft	5010.150
200 cm/6,5 ft	5010.200
250 cm/8,2 ft	5010.250
300 cm/9,8 ft	5010.300
500 cm/16,4 ft	5010.500

Newly sets

Newly Set Perlon Twister 200cm/6,5 ft + H10 4kg/8 lb hook	7025.200
Newly set Perlon Twister 200cm/6,5 ft + H100 20kg/44 lb hook	7026.200

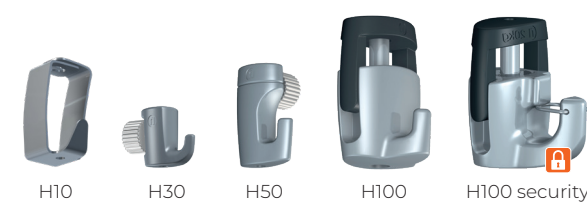
Steel Twister

100 cm/3,2 ft	6010.100
150 cm/4,9 ft	6010.150
200 cm/6,5 ft	6010.200
250 cm/8,2 ft	6010.250
300 cm/9,8 ft	6010.300
500 cm/16,4 ft	6010.500

Rod Twister

Newly Rod 2mm Twister white 200cm/6,5 ft	4201.200
Newly Rod hook H50 5kg/11 lb	3021.200

Hooks



Hook H10: Small hook with a maximum capacity of 4kg/8 lb. Only suitable for perlon cords. Easy to adjust while attached to the perlon cord, thanks to the spring mechanism.

Hook H30: Smallest hook in the world, therefore suitable to hang clickframes and small pieces with triangle hanger. Maximum capacity 3 kg/6 lb. Suitable for all basic hanging functions on both perlon cord and steel cable.

Hook H50: Maximum capacity 5 kg/11 lb. Suitable for all basic hanging functions on both perlon cord and steel cable.

Hook H100: Most reliable, self locking and strongest hook on the market. Suitable till 20 kg/44 lb on both perlon and steel cable.

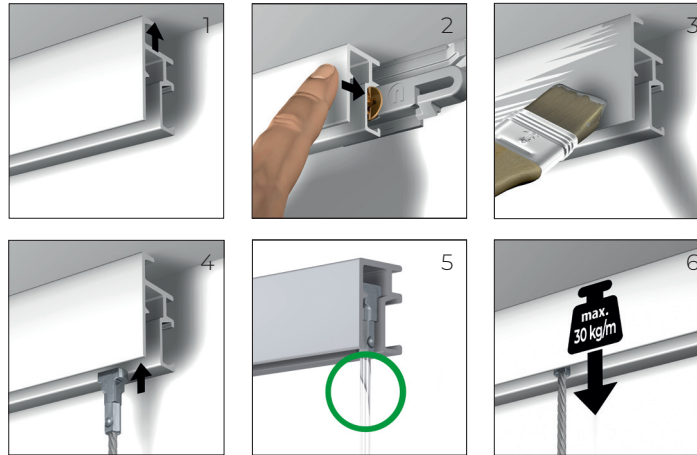
Hook H100 security: This theft delaying hook is very solid, strong and reliable with a capacity of 20kg/44 lb on both perlon- and steel cable. Suitable for public spaces.

Article numbers:

Newly H10 hook 4kg/8 lb	3024.100
Newly H30 hook 3kg /6 lb	3023.100
Newly H50 hook 5kg /11 lb	3021.100
Newly H100 hook 20kg /44 lb	3020.100
Newly H100 security hook 20kg /44 lb	3020.200

R20

All-round



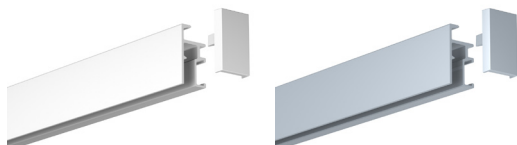
- 1 Installing tight to the ceiling
- 2 Easy one touch installation
- 3 Re-paintable
- 4 Hang wire in any position along the rail
- 5 Invisible hanging of the Twister head
- 6 Max. 30 kg per meter / 66 lb per 3 ft.



Watch the
installation video
here



Rail R20



The R20 wall rail is produced from high quality aluminium and is suitable till 30kg per meter / 66 lb per 3 ft. (size 17 x 12 mm/ 0,9 x 0,5 inch). Available in 2 colours.

White/primer: A lively and bright primer white (RAL 9016) which can be repainted without any special preparations.

Alu/silver: Anodized aluminium, gives a very contemporary and robust look.

Article numbers:

Newly R20 rail 200 cm/6,5 ft white	1201.200
Newly R20 rail 300 cm/9,8 ft white	1201.300
Newly R20 rail 200 cm/6,5 ft silver	1202.200

Newly R20 end cap white	2201.100
Newly R20 end cap silver	2202.100
Newly R20 corner connector white	2201.200
Newly R20 corner connector silver	2202.200
Newly R20 installation set 200cm/6,5 ft white	4040.220**
Newly R20 installation set 200 cm/6,5 ft silver	4040.221**

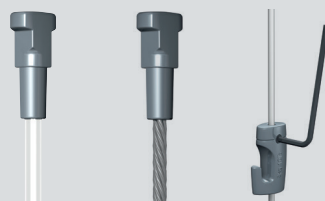
Newly clip white	3010.101*
Newly drill template	4090.100
Newly screw (3,5x40mm)	4010.120 *
Newly plaster board screw	4010.110*
FISCHER DUOPOWER 5mm plug 5x25	4020.060*

* Use 3 pieces per meter

** Includes 2 end caps + 1 corner connector

Each rail is separately packed in shrink wrap to avoid surface damage.

Cords and rod



The Twister comes in with a reliable transparent perlon cord \varnothing 2 mm polyamide or with a contemporary looking steel cable \varnothing 1,8 mm.

Both cords have a 20kg/44 lb. capacity. Besides these cords there is also a rigid 2 mm rod with a Twister head available.

Article numbers:

Perlon Twister

100 cm/3,2 ft	5010.100
150 cm/4,9 ft	5010.150
200 cm/6,5 ft	5010.200
250 cm/8,2 ft	5010.250
300 cm/9,8 ft	5010.300
500 cm/16,4 ft	5010.500

Newly sets

Newly set Perlon Twister 200cm/6,5 ft + H10 4kg/8 lb hook	7025.200
Newly set Perlon Twister 200cm/6,5 ft + H100 20kg/44 lb hook	7026.200

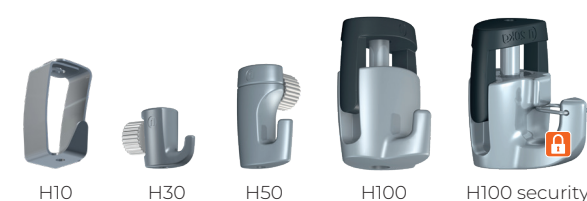
Steel Twister

100 cm/3,2 ft	6010.100
150 cm/4,9 ft	6010.150
200 cm/6,5 ft	6010.200
250 cm/8,2 ft	6010.250
300 cm/9,8 ft	6010.300
500 cm/16,4 ft	6010.500

Rod Twister

Newly Rod 2mm Twister white 200cm/6,5 ft	4201.200
Newly Rod hook H50 5kg/11 lb	3021.200

Hooks



Hook H10: Small hook with a maximum capacity of 4kg/8 lb. Only suitable for perlon cords. Easy to adjust while attached to the perlon cord, thanks to the spring mechanism.

Hook H30: Smallest hook in the world, therefore suitable to hang clickframes and small pieces with triangle hanger. Maximum capacity 3 kg/6 lb. Suitable for all basic hanging functions on both perlon cord and steel cable.

Hook H50: Maximum capacity 5 kg/11 lb. Suitable for all basic hanging functions on both perlon cord and steel cable.

Hook H100: Most reliable, self locking and strongest hook on the market. Suitable till 20 kg/44 lb on both perlon and steel cable.

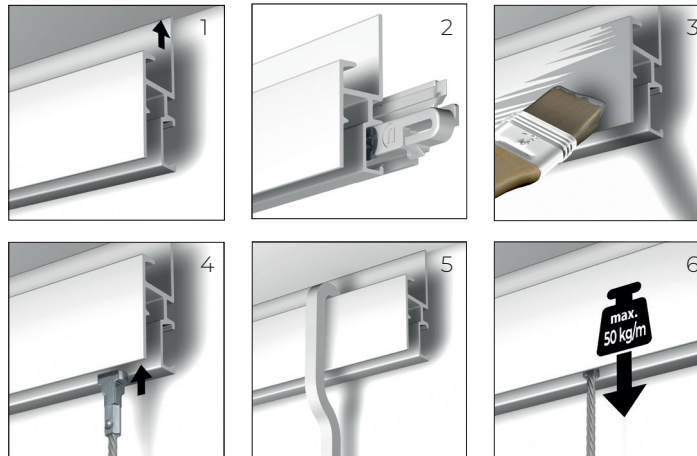
Hook H100 security: This theft delaying hook is very solid, strong and reliable with a capacity of 20kg/44 lb on both perlon- and steel cable. Suitable for public spaces.

Article numbers:

Newly H10 hook 4kg /8 lb	3024.100
Newly H30 hook 3kg /6 lb	3023.100
Newly H50 hook 5kg /11 lb	3021.100
Newly H100 hook 20kg /44 lb	3020.100
Newly H100 security hook 20kg /44 lb	3020.200

R30

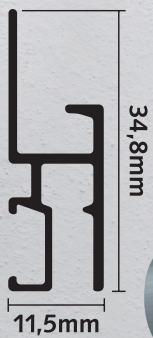
Professional



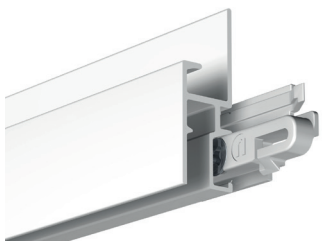
- 1 Installing tight to the ceiling
- 2 Easy one touch installation
- 3 Re-paintable
- 4 Hang wire in any position along the rail
- 5 Suitable for heavy duty rods and cords
- 6 Capacity 50 kg per meter / 110 lb per 3 ft.



Watch the
installation video
here



Rail R30



The R30 is a professional wall hanging rail which is very suitable for galleries and museums, made of a high quality aluminium and has a capacity of 50 kg per meter/110 lb per 6 ft.. (size 34,8 x 11,5mm/1,37 inch x 0,45 inch). Available in white.

White/primer: A lively and bright primer white (RAL 9016) which can be repainted without any special preparations.

Article numbers:

Newly R30 rail 200 cm/6,5 ft white	1301.200
Newly R30 rail 300 cm/9,8 ft white	1301.300
Newly R30 end cap white	2301.100
Newly R30 corner connector white	2301.200
Newly R30 installation set 200cm/6,5 ft white	4040.230**

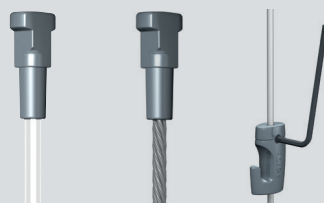
Newly clip white	3010.101*
Newly drill template	4090.100
Newly screw (3,5x40mm)	4010.120 *
Newly plaster board screw	4010.110*
FISCHER DUOPOWER 5mm plug 5x25	4020.060*

* Use 3 pieces per meter

** Includes 2 End caps + 1 corner connector

Each rail is separately packed in shrink wrap to avoid surface damage.

Cords and rod



The Twister comes in with a reliable transparent perlon cord \varnothing 2 mm polyamide or with a contemporary looking steel cable \varnothing 1,8 mm.

Both cords have a 20kg/44lb capacity. Besides these cords there is also a rigid 2 mm rod with a Twister head available.

Article numbers:

Perlon Twister

100 cm/3,2 ft	5010.100
150 cm/4,9 ft	5010.150
200 cm/6,5 ft	5010.200
250 cm/8,2 ft	5010.250
300 cm/9,8 ft	5010.300
500 cm/16,4 ft	5010.500

Newly sets

Newly set Perlon Twister 200cm/6,5 ft	
+ H10 4kg/8 lb hook	7025.200
Newly set Perlon Twister 200cm/6,5 ft	
+ H100 20kg/44 lb hook	7026.200

Steel Twister

100 cm/3,2 ft	6010.100
150 cm/4,9 ft	6010.150
200 cm/6,5 ft	6010.200
250 cm/8,5 ft	6010.250
300 cm/9,8 ft	6010.300
500 cm/16,4 ft	6010.500

Rod Twister

Newly Rod 2mm Twister white 200cm/6,5 ft	4201.200
Newly Rod hook H50 5kg/11 lb	3021.200

Hanging rod



Classic heavy duty hanging rod for heavy objects. The rod is made of aluminium and the hook of solid steel. The rod is 4x4mm/ 0,15 x 0,15 inch and has a length of 200cm/6,5 ft.

Article numbers:

Newly S-rod alu white 200 cm/6,5 ft	4110.200
Newly S-rod hook 20 kg/44 lb	3030.100

Hooks



Hook H10: Small hook with a maximum capacity of 4kg/8 lb. Only suitable for perlon cords. Easy to adjust while attached to the perlon cord, thanks to the spring mechanism.

Hook H30: Smallest hook in the world, therefore suitable to hang clickframes and small pieces with triangle hanger. Maximum capacity 3 kg/6 lb. Suitable for all basic hanging functions on both perlon cord and steel cable.

Hook H50: Maximum capacity 5 kg/11 lb. Suitable for all basic hanging functions on both perlon cord and steel cable.

Hook H100: Most reliable, self locking and strongest hook on the market. Suitable till 20 kg/44 lb on both perlon and steel cable.

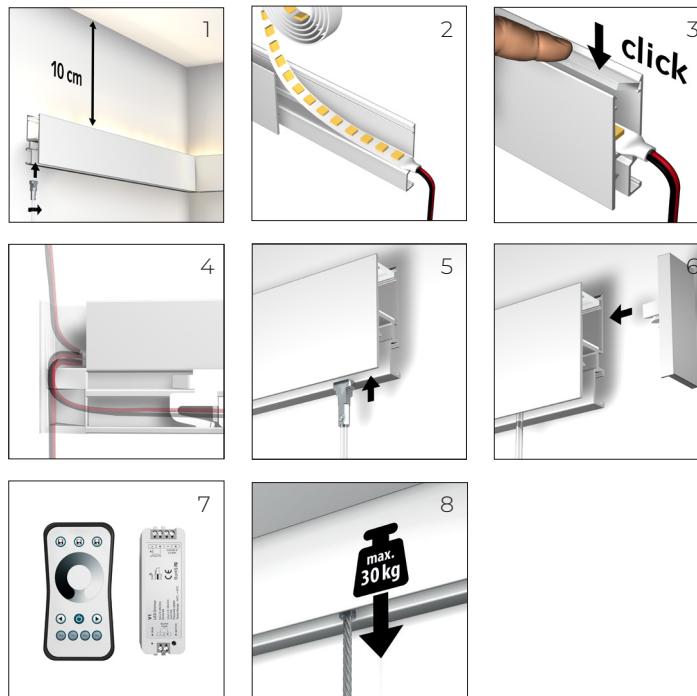
Hook H100 security: This theft delaying hook is very solid, strong and reliable with a capacity of 20kg/44 lb on both perlon- and steel cable. Suitable for public spaces.

Article numbers:

Newly H10 hook 4kg /8 lb	3024.100
Newly H30 hook 3kg /6 lb	3023.100
Newly H50 hook 5kg /11 lb	3021.100
Newly H100 hook 20kg /44 lb	3020.100
Newly H100 security hook 20kg /44 lb	3020.200

R35 LED

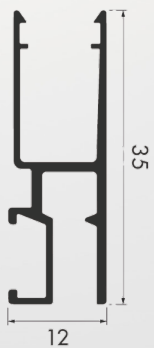
LED



- 1 Installing min 10 cm under the ceiling
- 2 Add LED light strip
- 3 Click diffuser
- 4 3 options to cover the electrical wires
- 5 Hang wire in any position along the rail
- 6 Place end cap
- 7 LED light dimmable
- 8 Capacity 30 kg per meter / 66 lb per 3 ft



Watch the
installation video
here



Rail R35 LED



The R35 LED is a premium wall hanging rail, ideal for residential areas. It is constructed from high-quality aluminum and features integrated LED lighting which is dimmable with the remote controller. The R35 LED can support up to 30 kg per meter / 66 lb per 6 ft. (size 35 x 12mm / 1.38 inch x 0.47 inch). Available in white.

White/primer: A lively and bright primer white (RAL 9016) which can be repainted without any special preparations.

Article numbers:

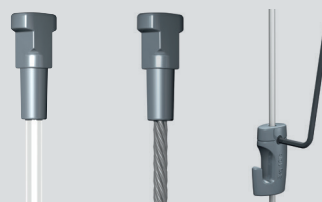
Newly R35 Rail LED + Diffuser 200cm/6.5 ft	1351.200
Newly R35 LED Diffuser 100cm/3.2 ft	2350.100
Newly R35 end cap white + wire guide L+R	2351.200
Newly R35 LED strip 60/m 25 W 300k 24V 5mtr	1359.010
24V LED Driver 1,5A 36W	1359.020
Remote controller	1359.030

Newly clip white	3010.101*
Newly screw (3.5x40mm)	4010.120 *
Newly plaster board screw	4010.110*
FISCHER DUOPOWER 5mm plug 5x25	4020.060*

* Use 3 pieces per meter

Each rail is separately packed in shrink wrap to avoid surface damage.

Cords and rod



The Twister comes in with a reliable transparent perlon cord \varnothing 2 mm polyamide or with a contemporary looking steel cable \varnothing 1,8 mm.

Both cords have a 20kg/44lb capacity. Besides these cords there is also a rigid 2 mm rod with a Twister head available.

Article numbers:

Perlon Twister

100 cm/3,2 ft	5010.100
150 cm/4,9 ft	5010.150
200 cm/6,5 ft	5010.200
250 cm/8,2 ft	5010.250
300 cm/9,8 ft	5010.300
500 cm/16,4 ft	5010.500

Newly sets

Newly set Perlon Twister 200cm/6,5 ft	
+ H10 4kg/8 lb hook	7025.200
Newly set Perlon Twister 200cm/6,5 ft	
+ H100 20kg/44 lb hook	7026.200

Steel Twister

100 cm/3,2 ft	6010.100
150 cm/4,9 ft	6010.150
200 cm/6,5 ft	6010.200
250 cm/8,5 ft	6010.250
300 cm/9,8 ft	6010.300
500 cm/16,4 ft	6010.500

Rod Twister

Newly Rod 2mm Twister white 200cm/6,5 ft	4201.200
Newly Rod hook H50 5kg/11 lb	3021.200

Hooks



Hook H10: Small hook with a maximum capacity of 4kg/8 lb. Only suitable for perlon cords. Easy to adjust while attached to the perlon cord, thanks to the spring mechanism.

Hook H30: Smallest hook in the world, therefore suitable to hang clickframes and small pieces with triangle hanger. Maximum capacity 3 kg/6 lb. Suitable for all basic hanging functions on both perlon cord and steel cable.

Hook H50: Maximum capacity 5 kg/11 lb. Suitable for all basic hanging functions on both perlon cord and steel cable.

Hook H100: Most reliable, self locking and strongest hook on the market. Suitable till 20 kg/44 lb on both perlon and steel cable.

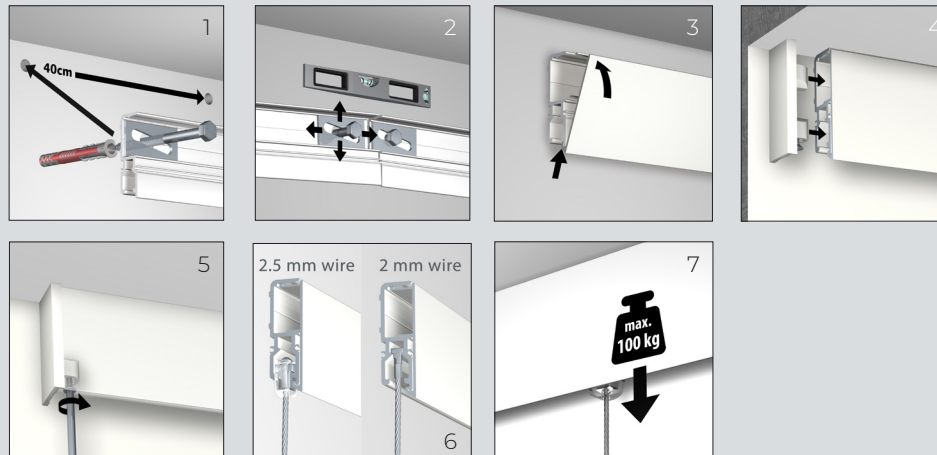
Hook H100 security: This theft delaying hook is very solid, strong and reliable with a capacity of 20kg/44 lb on both perlon- and steel cable. Suitable for public spaces.

Article numbers:

Newly H10 hook 4kg /8 lb	3024.100
Newly H30 hook 3kg /6 lb	3023.100
Newly H50 hook 5kg /11 lb	3021.100
Newly H100 hook 20kg /44 lb	3020.100
Newly H100 security hook 20kg /44 lb	3020.200

R70

Museum line



- 1 Professional wall rail
- 2 Easy adjustment to achieve level hanging using a mounting plate
- 3 Click the cover over the rail
- 4 Place end cap
- 5 Screw the end cap to tighten
- 6 Suitable for all Newly 2-mm and 2.5 mm hanging wires
- 7 Max. weight capacity 100 kg / 220 lb.



Watch the
installation
video here



Rail R70



The R70 rail is produced from high quality aluminium and has a weight capacity of 100kg per meter / 220 lb per 3 ft. The rail consists of two parts: an aluminium rail and an aluminium cover. Available in the colour white primer and silver.

White/primer: A lively and bright primer white (RAL 9016) which can be repainted without any special preparations.

Alu/silver: Anodized aluminium, gives a very contemporary and robust look.

Article numbers:

Newly R70 rail 200 cm/6,5 ft white	6110.200
Newly R70 rail cover 200 cm/6,5 ft white	6120.200
Newly R70 rail 200 cm/6,5 ft silver	6115.200
Newly R70 rail cover 200 cm/6,5 ft silver	6125.200

Newly R70 end cap white	6100.040
Newly R70 installation set 200 cm/6,5 ft	6100.050
Newly R70 adjust plate	6100.010
Newly screw stainless steel Din 571 6x80	6100.020*
FISHER plug 8 mm Duopower	6100.030*

* Use 3 pieces per meter

Looking for specific Museum hanging systems? Have a look at our Track & Slide products: www.trackandslide.com

Cords and hooks

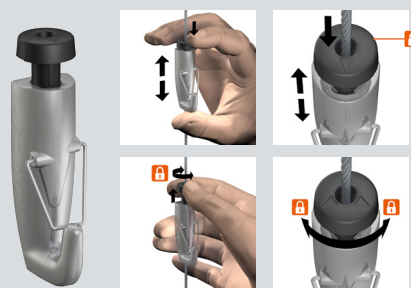


2.5-mm steel cable Twister Lock

2.5-mm steel cable including a Twister Lock for secure and reliable attachment of the wire in the rail.

Article numbers:

Newly 2.5mm steel cable Twister Lock 200 cm/6.5 ft	6200.200
Newly 2.5mm steel cable Twister Lock 300 cm/9.8 ft	6200.300
Newly 2.5mm steel cable Twister Lock 500 cm/16.4 ft	6200.500



H70 Autogrip Lock hook:

Designed specifically for hanging heavy works of art. The hook can only be used with the 2.5-mm steel cable Twister Lock. Equipped with safety and auto lock function.

Article numbers:

Newly H70 Autogrip Lock 100kg/220 lb.	6100.100
---------------------------------------	----------

Compatible with



R70 rail is also compatible with:

All 2-mm steel and perlon hanging wires and rods.

The R70 rail is also ideal for hanging smaller and lighter pieces of art. Use in this case the 2-mm hanging wires in combination with the other Newly hooks.

Article numbers:

Perlon Twister

100 cm/3,2 ft	5010.100
150 cm/4,9 ft	5010.150
200 cm/6,5 ft	5010.200
250 cm/8,2 ft	5010.250
300 cm/9,8 ft	5010.300
500 cm/16,4 ft	5010.500

Steel Twister

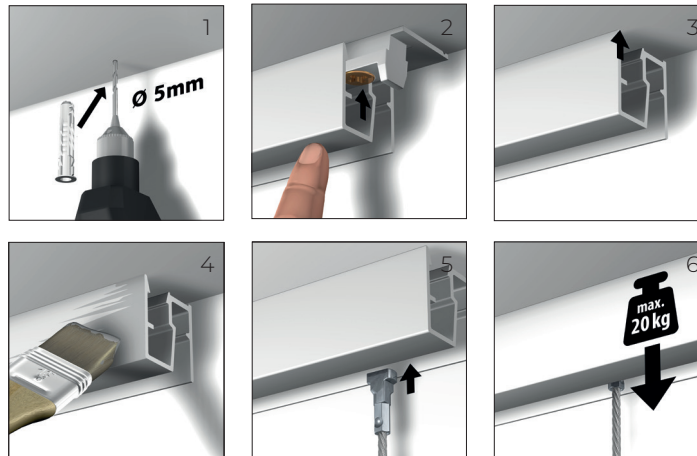
100 cm/3,2 ft	6010.100
150 cm/4,9 ft	6010.150
200 cm/6,5 ft	6010.200
250 cm/8,5 ft	6010.250
300 cm/9,8 ft	6010.300
500 cm/16,4 ft	6010.500

Hooks

Newly H10 hook 4 kg /8 lb	3024.100
Newly H30 hook 3kg /6 lb	3023.100
Newly H50 hook 5kg /11 lb	3021.100
Newly H100 hook 20kg /44 lb	3020.100
Newly H100 security hook 20kg /44 lb	3020.200

R40

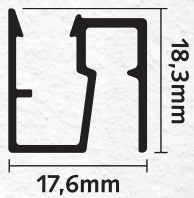
Up



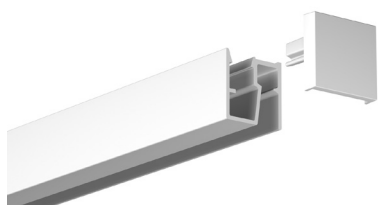
- 1 Installed anywhere onto the ceiling
- 2 Click rail on the clips
- 3 Ceiling installation
- 4 Re-paintable
- 5 Invisible hanging of the Twister head & hang wire in any position along the rail
- 6 Max. 20 kg per meter/44 lb per 3 ft.



Watch the installation video here



Rail R40



The R40 rail is the only rail in the world which can be attached onto the ceiling with clips. Unique, the rail can be installed anywhere along the ceiling. Very suitable to install in shop windows for displaying all kind of objects. The R40 ceiling rail is produced from high quality aluminium and is suitable to 20 kg per meter/ 44 lb per 3 ft. (seize 18,3 x 17,6 mm/0,72 x 0,69 in). Available in white.

White/primer: A lively and bright primer white (RAL 9016) which can be repainted without any special preparations

Article numbers:

Newly R40 ceiling rail white 200cm/6,5 ft	1401.200
Newly R40 end cap white	2401.100
Newly R40 clip	3010.400*
Newly installation set R40 200cm/6,5ft white	4044.200**

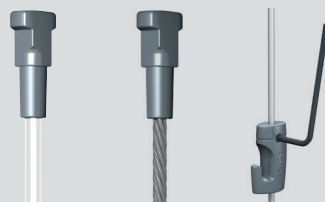
Newly screw (3,5x40mm)	4010.120 *
FISCHER DUOPOWER 5mm plug 5x25	4020.060*
Newly R40 Installation set 200cm/6,5 ft	4044.200

* Use 3 pieces per meter

** 2 End caps

Each rail is separately packed in shrink wrap to avoid surface damage.

Cords and rod



The Twister comes in with a reliable transparent perlon cord \varnothing 2 mm polyamide or with a contemporary looking steel cable \varnothing 1,8 mm.

Both cords have a 20kg/44lb. capacity. Besides these cords there is also a rigid 2 mm rod with a Twister head available.

Article numbers:

Perlon Twister

100 cm/3,2 ft	5010.100
150 cm/4,9 ft	5010.150
200 cm/6,5 ft	5010.200
250 cm/8,2 ft	5010.250
300 cm/9,8 ft	5010.300
500 cm/16,4 ft	5010.500

Newly sets

Newly set Perlon Twister 200cm/6,5 ft + H10 4kg/8 lb hook	7025.200
Newly set Perlon Twister 200cm/6,5 ft + H100 20kg/44 lb hook	7026.200

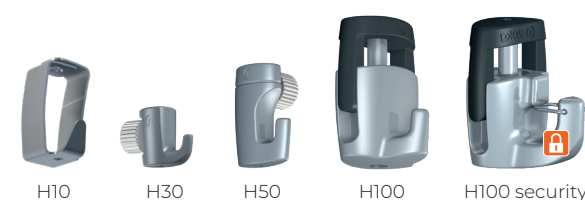
Steel Twister

100 cm/3,2 ft	6010.100
150 cm/4,9 ft	6010.150
200 cm/6,5 ft	6010.200
250 cm/8,5 ft	6010.250
300 cm/9,8 ft	6010.300
500 cm/16,4 ft	6010.500

Rod Twister

Newly Rod 2mm Twister white 200cm/6,5 ft	4201.200
Newly Rod hook H50 5kg/11 lb	3021.200

Hooks



Hook H10: Small hook with a maximum capacity of 4kg/8 lb. Only suitable for perlon cords. Easy to adjust while attached to the perlon cord, thanks to the spring mechanism.

Hook H30: Smallest hook in the world, therefore suitable to hang clickframes and small pieces with triangle hanger. Maximum capacity 3 kg/6 lb. Suitable for all basic hanging functions on both perlon cord and steel cable.

Hook H50: Maximum capacity 5 kg/11 lb. Suitable for all basic hanging functions on both perlon cord and steel cable.

Hook H100: Most reliable, self locking and strongest hook on the market. Suitable till 20 kg/44 lb on both perlon and steel cable.

Hook H100 security: This theft delaying hook is very solid, strong and reliable with a capacity of 20kg/44 lb on both perlon- and steel cable. Suitable for public spaces.

Article numbers:

Newly H10 hook 4kg /8 lb	3024.100
Newly H30 hook 3kg /6 lb	3023.100
Newly H50 hook 5kg /11 lb	3021.100
Newly H100 hook 20kg /44 lb	3020.100
Newly H100 security hook 20kg /44 lb	3020.200

R50

R50 Display

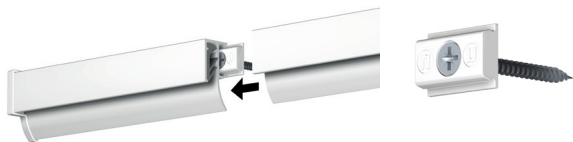
Newly R50 Display is the most compact profile in the field of self clamping paper holders. You can perfectly display cards, posters, drawings without damaging them. You can use them at home, in offices, schools, restaurants and kindergarten. The specially developed rubber clamping profile into the rail makes it possible to hang different paper thicknesses in one. The R50 Display is produced from high quality aluminium in combination with a rubber clamping inside (size 29.5 x 14.2 mm/1,16 x 0,55 inch).



Watch the
installation video
here



Rail R50



White/primer: A lively and bright primer white (RAL 9016) which can be repainted without any special preparations.

The rail comes with clips, end caps, screws and plugs.

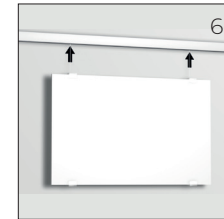
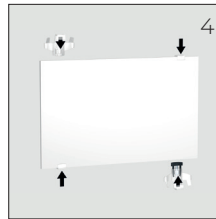
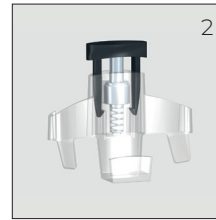
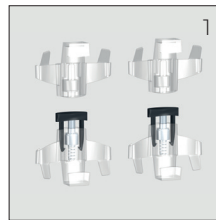
Article numbers:

Newly R50 display rail set white 200 cm/6,5 ft	1501.200
Newly R50 display clip	3010.500
Newly R50 end cap white L+R	2501.100



H300

Panel Display



- 1 H300 complete set
- 2 Self locking lower clamp
- 3 Upper clamp
- 4 Easy and fast installation
- 5 Cords can be easily hidden on the reverse
- 6 Easy, flexible and secure hanging

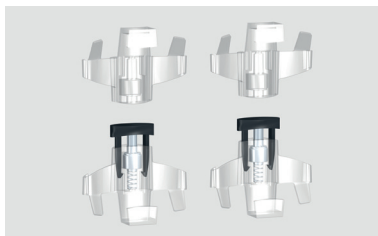


Watch the
installation video
here



WARRANTY
10
YEARS

n H300 Panel Display



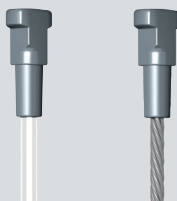
The H300 Panel Display hanger is the perfect and only solution to hang dibond, plexiglass, wood panels, carton, aluminium or any other material with a thickness between 3 and 6mm/ 0,1 – 0,25 inch and a weight of 10 kg/22 lbs on a hanging system without glueing, nailing or making any holes into the object. Installing is simple due to a flexible clamping system.

The H300 set consists of 2 self locking lower clamps, 2 upper clamps and an instruction sheet but excluding cords.

Article numbers:

Newly H300 Panel Display hanger set 10kg/22lb 7070.300

n Cords



The Twister comes in with a reliable transparent perlon cord \varnothing 2 mm polyamide or with a contemporary looking steel cable \varnothing 1,8 mm.

Both cords have a 20kg/44lb. capacity.

Besides these cords there is also a rigid 2 mm rod with a Twister head available.

Article numbers:

Perlon Twister

100 cm/3,2 ft	5010.100
150 cm/4,9 ft	5010.150
200 cm/6,5 ft	5010.200
250 cm/8,2 ft	5010.250
300 cm/9,8 ft	5010.300
500 cm/16,4 ft	5010.500

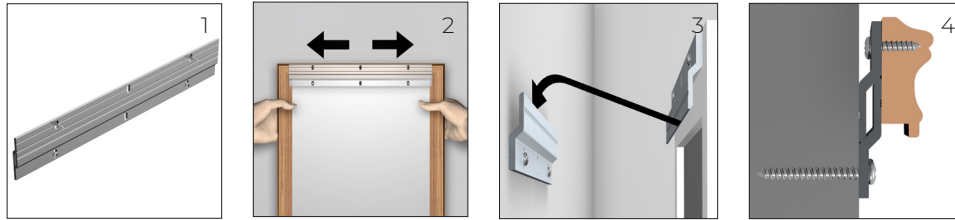
Steel Twister

100 cm/3,2 ft	6010.100
150 cm/4,9 ft	6010.150
200 cm/6,5 ft	6010.200
250 cm/8,5 ft	6010.250
300 cm/9,8 ft	6010.300
500 cm/16,4 ft	6010.500

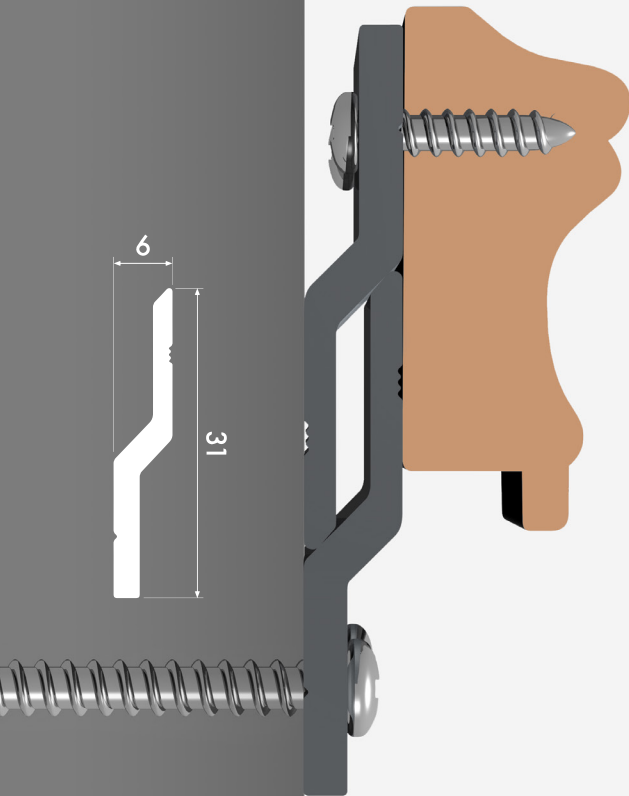


Z100

Z100 Powerbar



- 1 Can be installed anywhere along the wall
- 2 Panel can be adjusted to the left and right
- 3 Mount one bar to the panel, the other to the wall
- 4 Easy, flexible and secure hanging



WARRANTY
10
YEARS

Z100



The Z100 Powerbar offers an adjustable solution for hanging large panels. The panels can be hung stable against the wall. One bar of the Z100 is attached to the panel, the other bar is mounted to the wall. The panel can be adjusted horizontally.

The Z100 Powerbar is available in, 40 cm/1,3 ft, 60 cm/1,9 ft, 100 cm/3,2 ft and 200 cm/6,5 ft. The installation set is necessary to mount the Z100 and consists of 4 screws and 2 plugs.

Article numbers:

Newly Z100 Powerbar 40cm/1,3 ft (pair of 2)	7100.040
Newly Z100 Powerbar 60cm/1,9 ft (pair of 2)	7100.060
Newly Z100 Powerbar 100cm/3.2 ft (p/10)	7100.100
Newly Z100 Powerbar 200cm/6.5 ft (p/10)	7100.200

Newly Z100 screw 3,5x40 PZ 2	4010.150*
Newly Z100 screw 3,5x12 PZ 2	4010.160*
FISCHER DUOPOWER 5mm plug 5x25	4020.060*
Newly Z100 Powerbar Installation set 20cm/0,6 ft	4045.020

* Recommended 1 pc/10cm/0,3 ft



SOLOHANGER

Solohanger



- 1 Easy installation
- 2 Twist to close cap
- 3 Hang on wall, ceiling and slanted ceiling
- 4 Installation against wall
- 5 Installation on ceiling



Watch the
installation video
here

A great solution for flexibility with a minimum of installation needed. Perfect to hang from a ceiling but also useful to hang on a small wall, columns, shop windows and steel ceilings. The Solohanger hanger offers the possibility to hang more than 1 object on the same cord to a total maximum of 20 kg/44lb per set.

The Solohanger is available as a set with a steel cable or perlon cord. The set with perlon cord comes together with the H10 hook. A complete Solohanger set with steel cable consists of; mountingfoot, closing cap, steel cable 1,8mm. (100, 200 or 500cm/ 3,2, 6,5 or 16,4 ft) H100 hook, plug and screw.

The complete Solohanger set with perlon cord consists of mountingfoot, closing cap, perlon cord 2mm (200 cm/ 6,5 ft), H10 hook, plug and screw.

Article numbers:

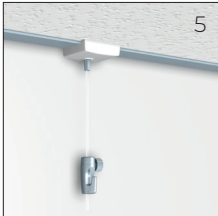
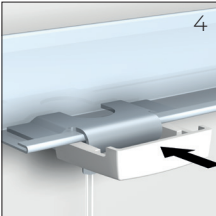
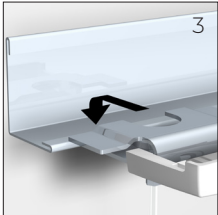
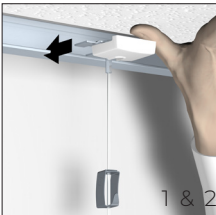
Newly Set Solohanger 20kg/44lb Steelwire 100cm/3,2 ft	7030.100
Newly Set Solohanger 20kg/44lb Steelwire 200cm/6,5 ft	7030.200
Newly Set Solohanger 20kg/44lb Steelwire 500cm/16,4 ft	7030.500
Newly Set Solohanger 4kg/8 lb Perlon cord 200cm/ 6,5 ft	7035.200



WARRANTY
10
YEARS

CEILINGHANGER

Ceilinghanger



- 1 Pull the cover backwards
- 2 Lift the suspended ceiling tile
- 3 Click clamp on the steel strip of the suspended ceiling
- 4 Slide the cover back in place
- 5 Lower the suspended ceiling tile



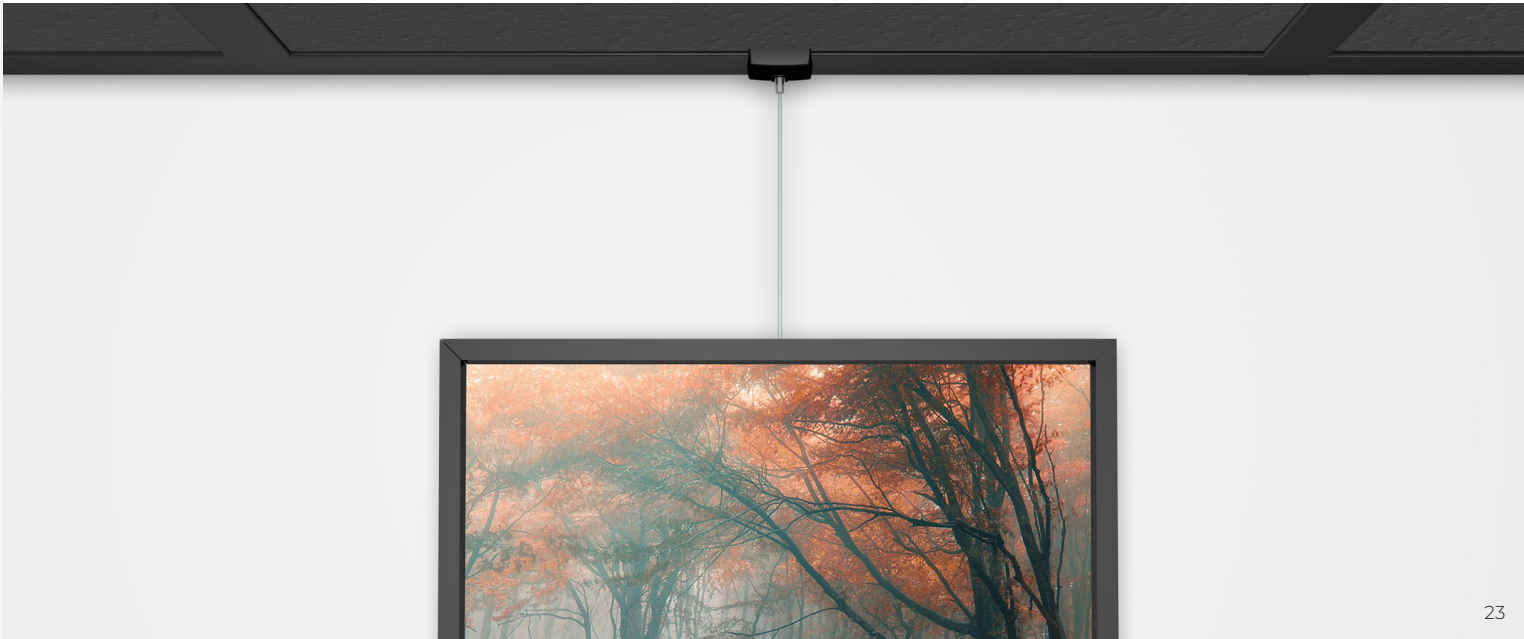
Watch the
installation video
here

Article numbers:

Newly Set Ceilinghanger 200cm/6,5 ft Perlon cord 5kg/11lb	7040.200
Newly Set Ceilinghanger 200cm/6.5 ft Perlon cord 4kg/8lb	7042.200
Newly Set Ceilinghanger Black 200cm/6.5ft Perlon cord 5kg/11lb	7041.200
Newly Set Ceilinghanger Black 200cm/6.5 ft Perlon cord 4kg/8lb	7043.200

You can use the steel strip of your suspended ceiling parallel to the wall as a hanging rail system with the Ceilinghanger Flexible, easy and safe without installing a real system or drilling holes.

A complete Ceilinghanger set consists of; a ceiling clamp with flexible cover, a perlon cord 200cm/6,5 ft and a hook. Available in Black and white.



STOPPER

Stopper set

The Newly Stopper set is the only solution to prevent sliding the cord down when the rail is installed on a steep angle in an attic or on the stairs.

Screw the nipple in at any point along the rail where the cord has to be stopped from sliding down.

A complete Stopper set consists of; screwnipple, perlon cord 150cm/4,9 ft, H50 hook and an allen key.



Article numbers:

Newly Stopper set Perlon cord 150cm/4,9 ft + Hook 5kg/11 lb

7020.200



WARRANTY
10
YEARS

SALES SUPPORT

Sales Support

Floor Display



To support the sales and promotion of Newly hanging systems, Newly offers a selection of Sales Support material.

Sample Box



Catalog & Mini catalog



Desk Display R35 Rail LED

Article numbers:

Newly Floor Display	9010.250
Newly Desk Display R35 Rail LED	9010.215
Newly Sample Box complete	9010.180
Newly Sample Box R70 Museum Line	9010.190
Newly mini catalog	9090.100
Newly Catalog	9090.200
Newly Sample kit R10	9010.110
Newly Sample kit R20	9010.120
Newly Sample kit R40	9010.170



Sample kit

NOTES

NOTES

Newly
Herastraat 39
5047 TX Tilburg
The Netherlands

Powered by Artiteq

www.newlypicturehangingsystems.com